



- Fantastic views of the lake and serene outdoor area, with lush landscaping, gazebo & deck
- Close to the I-95 & Baymeadows Road interchange with convenient access to Interstate 295, Southside Blvd, Baymeadows Road & Butler Blvd
- Conveniently located near retail, restaurants, and banking
- Ample natural light in suites
- Freshly renovated lobby
- Grand entry with open stairwell
- Ample parking

OWNED AND OPERATED BY



ACORN PROPERTY HOLDINGS

OFFERING SUMMARY

Available	1,255 RSF - 8,542 RSF
Lease Rate	\$17.25 - \$18.50 RSF/YR FULL SERVICE

AVAILABLE SUITES

Suite		Size (RSF)	Asking Rate (\$/RSF/YR)
105	VERY PROMINENT, FULL GLASS FRONTAGE. BREAK ROOM.	1,558	\$18.50
120	PROMINENT FULL STOREFRONT GLASS	2,553	\$18.00
212	STOREFRONT GLASS ENTRY	1,255	\$17.75
215		1,660	\$17.75
300		8,542	\$17.25

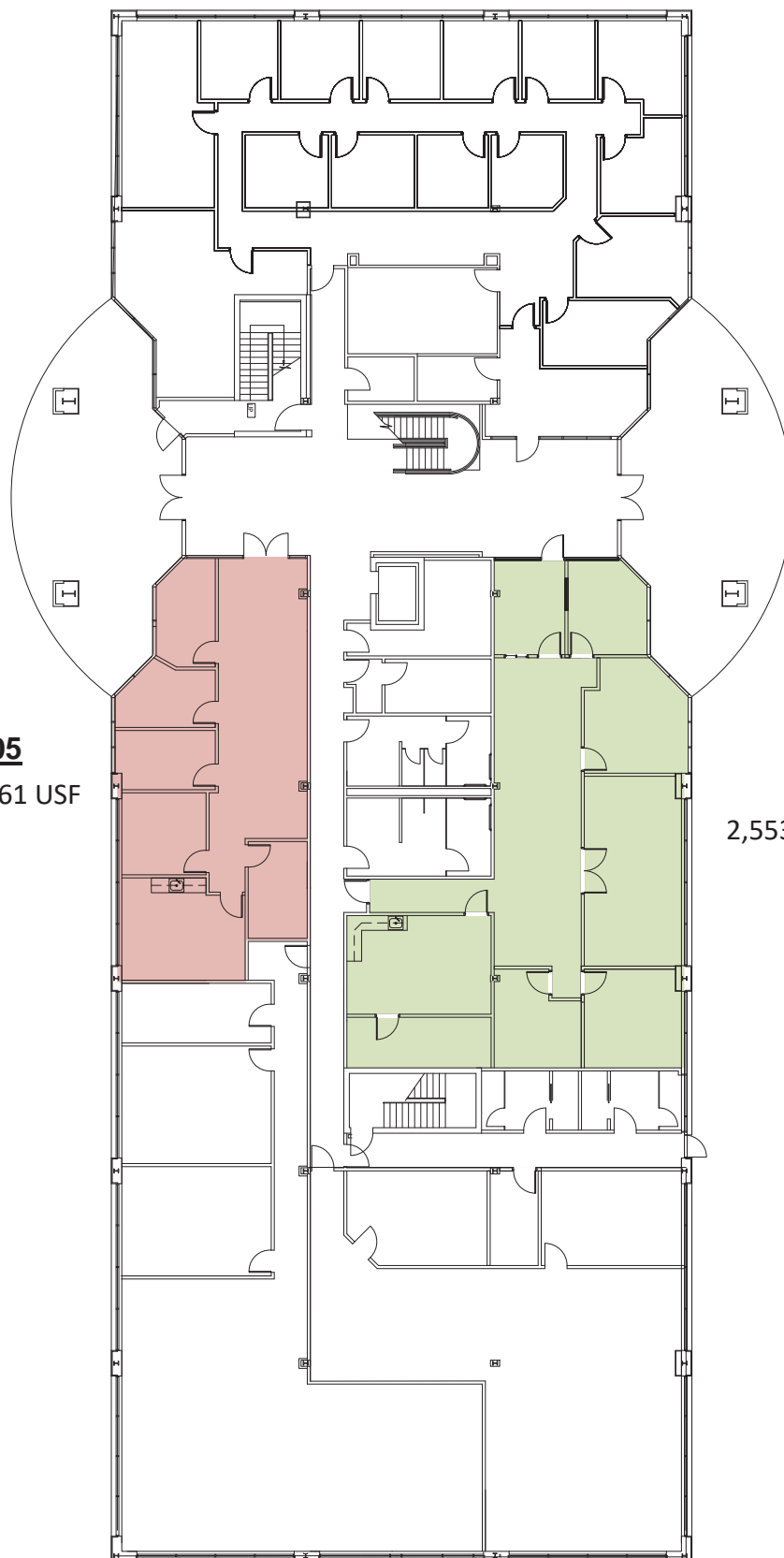
Joe Scavetto / VP Office Brokerage
 904.424.9000 / jscavetto@phoenixrealty.net

Connor Palmisano / Associate
 904.613.5226 / cpalmisano@phoenixrealty.net



LAKESIDE PLAZA

8665 Baypine Rd, Jacksonville, FL 32256



SUITE 105
1,558 RSF / 1,361 USF

SUITE 120
2,553 RSF / 2,230 USF

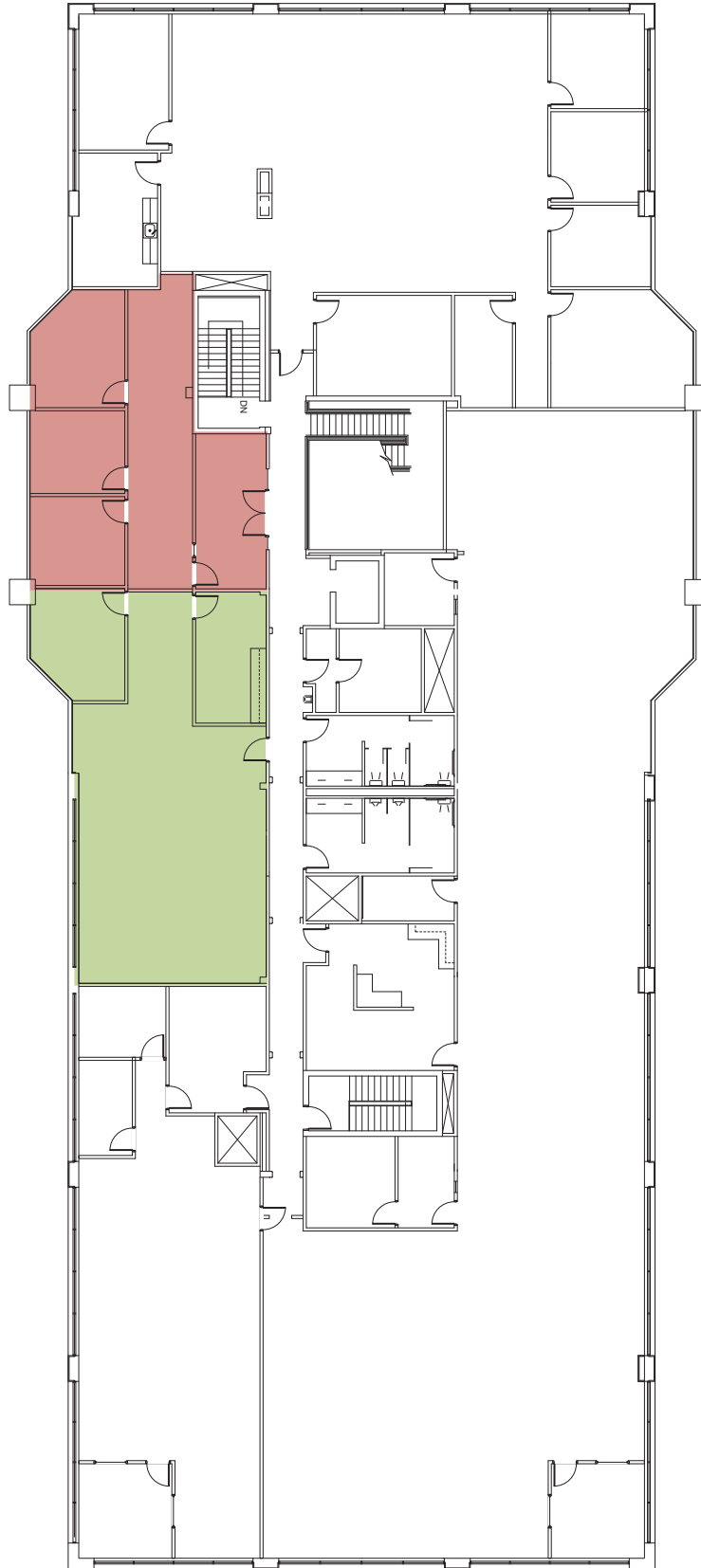
Joe Scavetto / VP Office Brokerage
904.424.9000 / jscavetto@phoenixrealty.net

Connor Palmisano / Associate
904.613.5226 / cpalmisano@phoenixrealty.net

 **Newmark**
Phoenix Realty Group

SUITE 212
1,255 RSF / 1,096 USF

SUITE 215
1,660 RSF / 1,450 USF



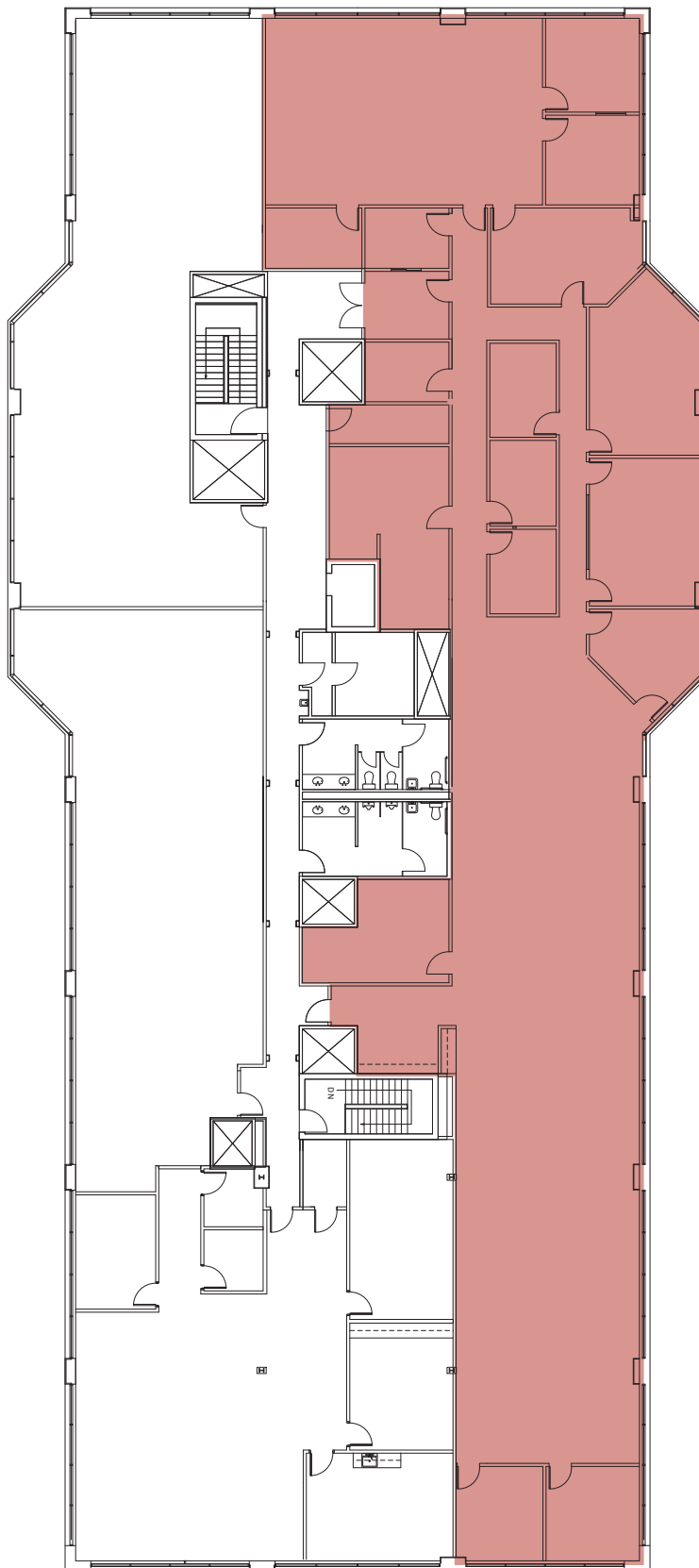
Joe Scavetto / VP Office Brokerage
904.424.9000 / jscavetto@phoenixrealty.net

Connor Palmisano / Associate
904.613.5226 / cpalmisano@phoenixrealty.net



LAKESIDE PLAZA

8665 Baypine Rd, Jacksonville, FL 32256



SUITE 300

8,542 RSF / 7,460 USF

Joe Scavetto / VP Office Brokerage

904.424.9000 / jscavetto@phoenixrealty.net

Connor Palmisano / Associate

904.613.5226 / cpalmisano@phoenixrealty.net

